



1

DW (Kapak genişliği)	C	D	E
300	550	55	35
350	550	55	35
350	465	45	40
400	465	50	35

Technical drawing showing the hinge assembly process. The drawing includes a side view of the cabinet door with hinges labeled A, B, and C. A top view shows the hinge mounting plate with dimensions 19.5, 12.5, 28, 62, and 19.5. A circular detail shows a Ø35 hole with dimensions X and Y. A table below provides X and Y values for different DW values. A perspective view shows the hinge being attached to the door edge, with dimensions C, D, and E. Two inset diagrams show the internal hinge mechanism and the door being closed.

X	Y
45	9.5
48	6
52	5.5

**2** Dıştan montaj

**2** İçten montaj

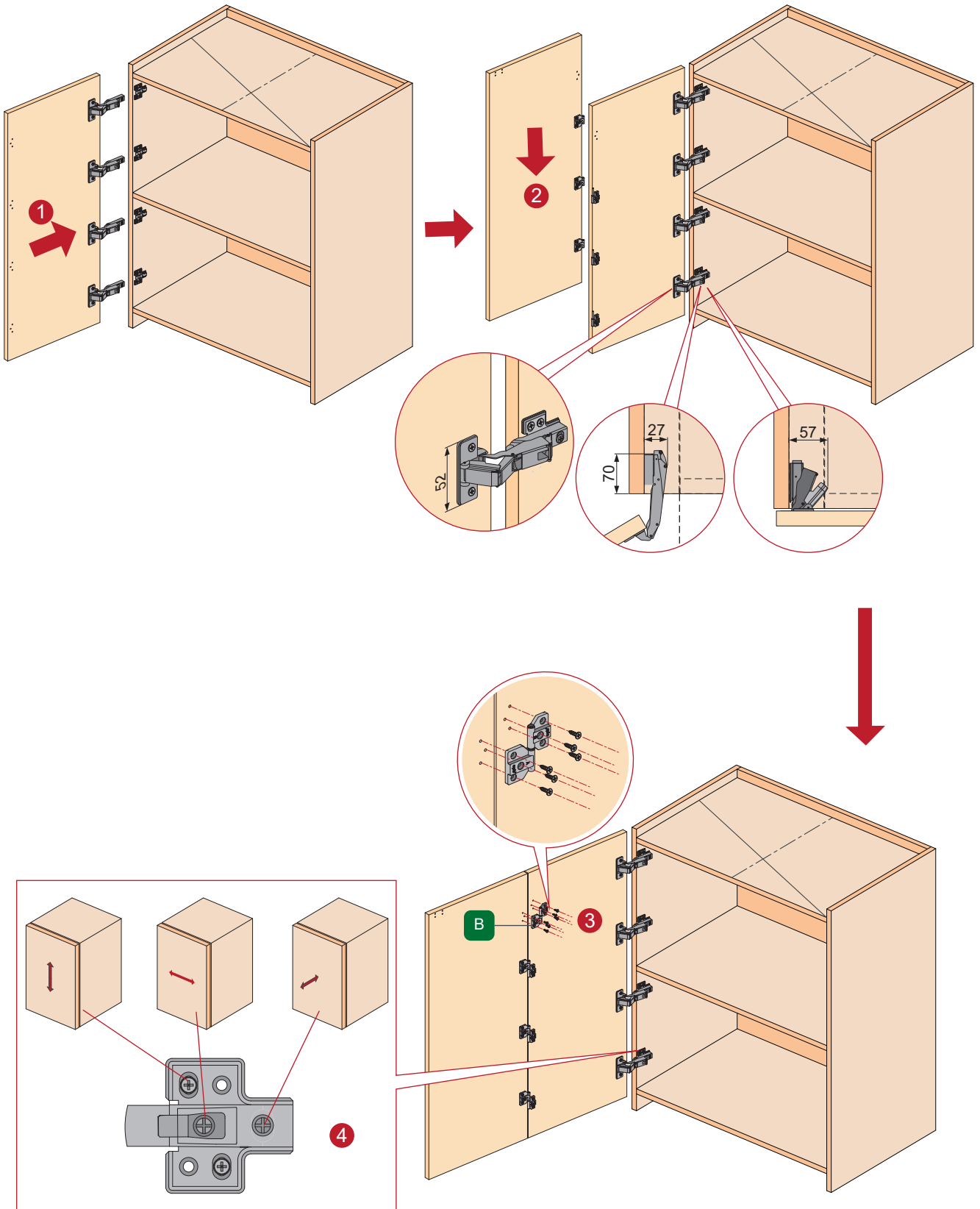
2

Dıştan Montaj

İçten Montaj

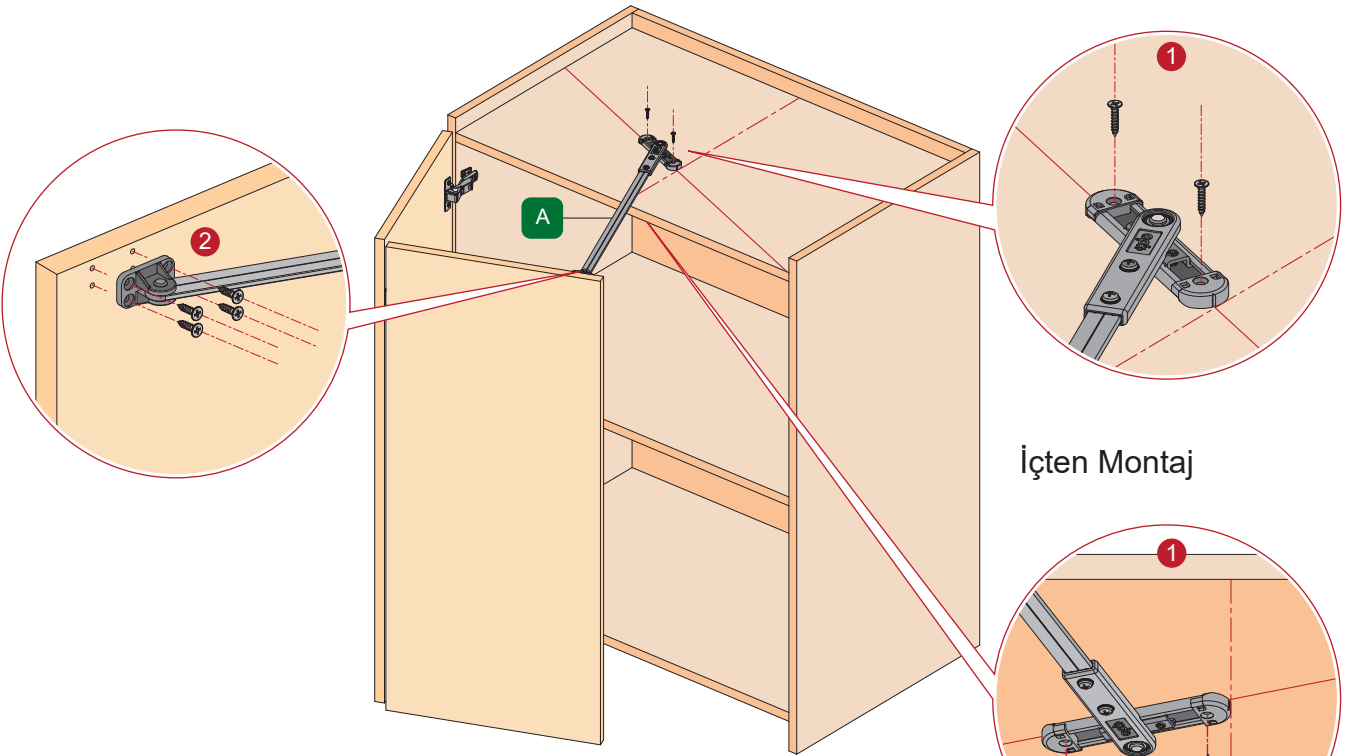
Two diagrams illustrating the installation of the hinges. The left diagram, 'Dıştan Montaj', shows the cabinet door being attached to the cabinet frame from the outside. The right diagram, 'İçten Montaj', shows the cabinet door being attached from the inside. Both diagrams use numbered callouts (1, 2, 3, 4) to indicate the steps: 1. Hinge attachment to the door, 2. Hinge attachment to the cabinet frame, 3. Final hinge adjustment, and 4. Door closing. Two circular insets provide detailed views of the hinge mounting hardware.

3



4

Dıştan Montaj



İçten Montaj

